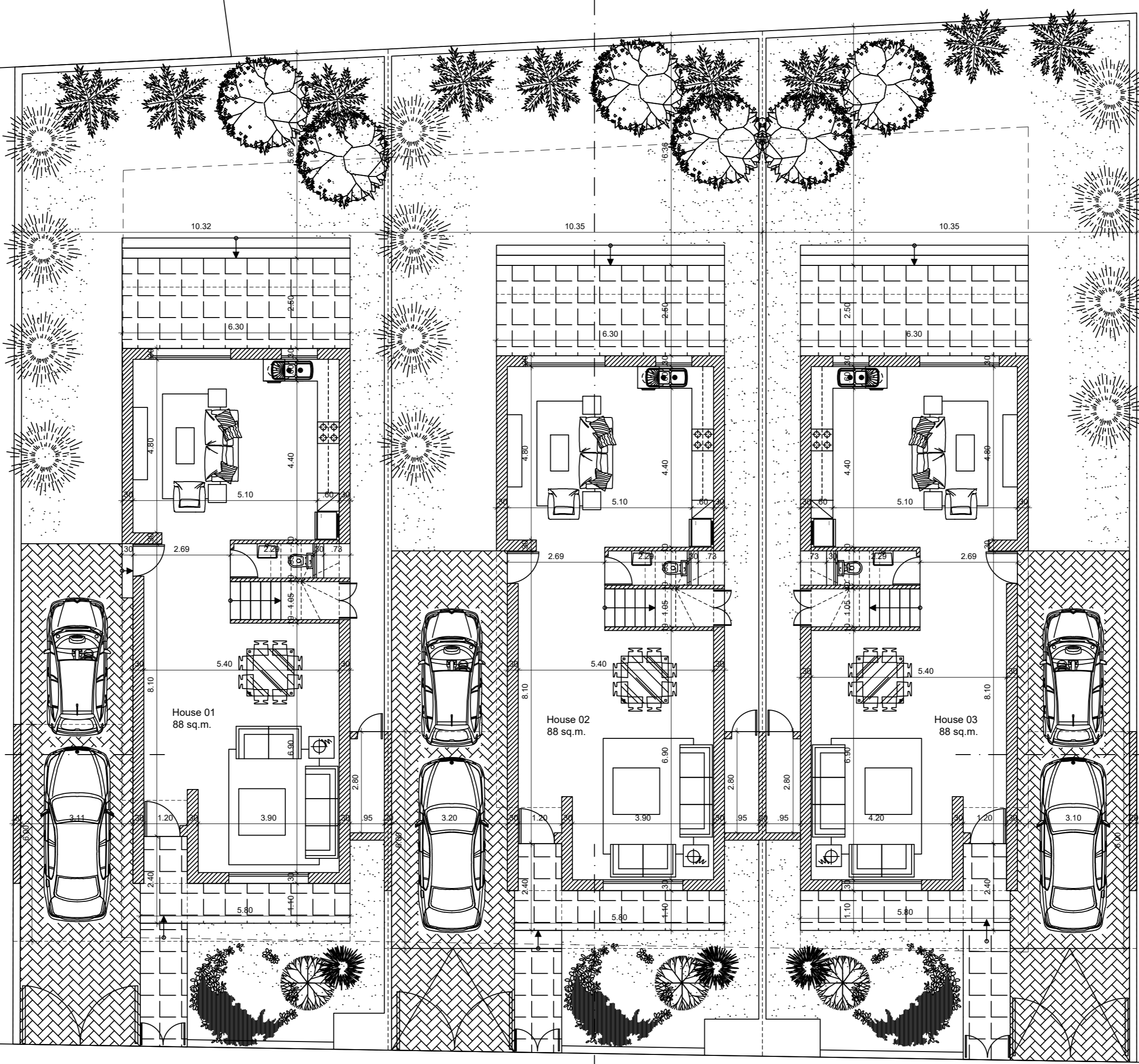


A

B

B

A



House 01  
88 sq.m.

House 02  
88 sq.m.

House 03  
88 sq.m.

Notes:  
 ✦ XXX suggested levels  
 ✦ XXX existing levels  
 PLOT : 870 sq.m.

House 01  
 PLOT: 283 sq.m.  
 Ground: 88 sq.m.  
 First: 102 sq.m.

total: 190 sq.m.

House 02  
 PLOT: 290 sq.m.  
 Ground: 88 sq.m.  
 First: 102 sq.m.

total: 190 sq.m.

House 03  
 PLOT: 294 sq.m.  
 Ground: 88 sq.m.  
 First: 102 sq.m.

total: 190 sq.m.

www.dgrussolarkou.co.uk  
**dE GRUSSO LARKOU ARCHITECTS**  
 13 Otha Digeni Stavraki Hall, ap. 401, Limassol 6030, CY  
 Tel: +357 24616177  
 dgrussolarkou@larkou.com.cy  
 Fax: +357 24616153

File name:  
 A02-116 SKD20(Adela Cikodemis 7.4.20)

Checked by : G.L.      Drawn by : F.D.

Project Name  
**G.A. Sketsios Developers LTD**  
**3 Residences in Aradippou**  
**PLOT 211**

Drawing Name  
 Ground Floor Plan

Scale  
 1:100

Date  
 April 20

Drawing No.  
 110 SKD20  
 A01

Stamp & Sign

F.D.

G.L.